










## TVS-50

## Pushrod Camera Inspection System



**TVS-50** Pushrod Camera Inspection System is a special tool for inspecting pipeline located in municipal or commercial or residential areas, with the diameter ranging from DN50 and typically upto DN150. As a portable tool, the system has high-definition video and is connected by WiFi for long distance operation.

HD Camera

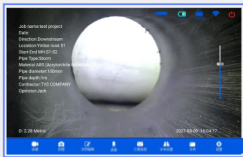
		
Type	D25-HD	D32-HD Self-balance
Resolution	2 megapixels	2 megapixels
Light and brightness	LED 30LUM	LED 30LUM
Dimension	D25 × 29mm	D32 × 54mm
Weight	100g	180g
Camera		
Camera with sonde		
Sonde frequency	512Hz    640Hz    8KHz    33KHz	
Centralizer	 DN38mm Centralizer  DN45mm Centralizer	 DN45mm Centralizer  DN75mm Centralizer  DN100mm
Suitable pipe DN	D35-D75mm	D40-125mm

TVS-50 Coiler and electric system



- Aluminum alloy and carbon fiber
- Standard 30m solid cable (max. 50m optional)
- Built-in high-capacity rechargeable battery, working more than 8 hours
- 2.4 G WiFi transmission
- Suitable for pipe DN30-150mm
- Dimension: 592 x 356 x 732mm
- Weight: approx 21KG

Control



- Multi-platform control system (Windows or Android tablet with touch screen)
- Project OSD information input
- Self-leveling always
- Video storage and project information overlay
- WiFi direct connection, pair for special use
- Audio input for pipe defects
- Sonde with multi-frequency (512Hz, 640Hz, 8kHz, 33KHz)

Motorized rod feeder



PH-50 motorized rod feeder provides automatic winding for the push rod system, friendly operation in narrow spaces, and also more stable image quality.

- Wireless control
- Quick assembly
- Auto fit pipe opening
- Speed is adjustable

